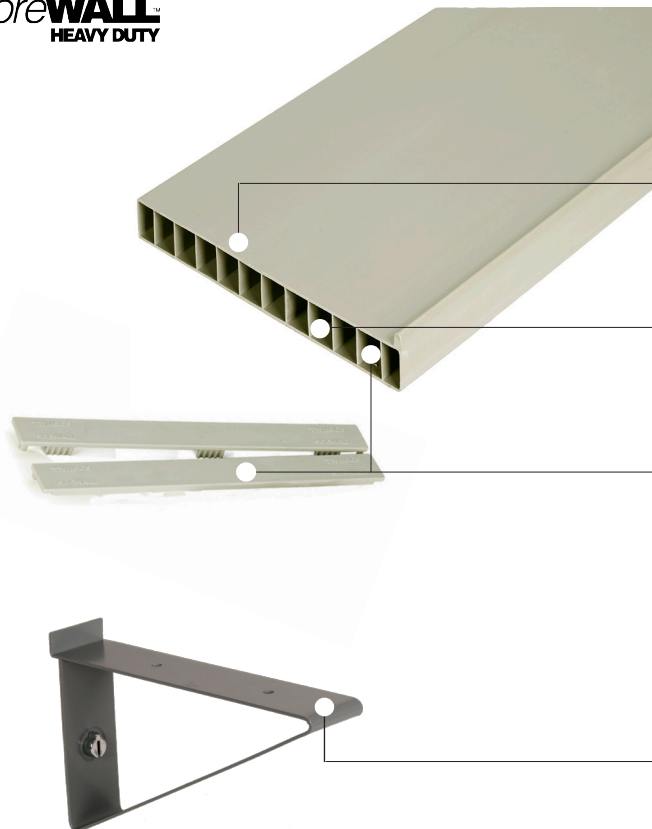




**storeWALL**  
HEAVY DUTY



**storeWALL HD CustomCut™ Reversible  
10" & 15" ThermoPlastic Shelves**

Ideal for larger items, cases, toys etc.  
Flip the shelf over and it becomes a tray!

**Create any length shelf up to 8' long**  
Select the shelf size that is best for you. Shelves can be cut to the precise length that best fits your storage needs.

**Exclusive Hollow I-Beam design**  
Engineered with 21st century technology to insure versatility, strength and performance, without unnecessary weight.

**HD SnapFit™ modular end caps**  
End Caps simply snap in place turning the *custom shelf* into a *tray* and adding a finished appearance.

**Solid Core material**  
Easy to clean shelves are waterproof, mold, mildew and chemical resistant. Color is throughout and never needs paint.

**Use with storeWALL HD Shelf Brackets featuring the exclusive Camlok™**  
Rugged and strong brackets designed for demanding applications.